



the indian review of
world furniture,
interiors and design

91

volume 17 . issue 02 . march - april 2020

FORENA



Architects serve a greater purpose than
being mere designers and artists. They
carry the potential to be activists.

RAJEEV SHAH

Principal Designer, Delta



INSIDE:

if FOCUS : FACADES | if INDUSTRY FORUM : PREFABRICATED HOMES | if PERSONALITY : AR. AMIT PORWAL
if GENNEXT : QUIRK STUDIO | if PHOTO ESSAY : ANTONELLA SAVA

QUIRK STUDIO, mumbai

designers disha bhavasar and shivani ajmera push boundaries as they experiment with color, material and concept to form a unique design aesthetic.

Design heads of Mumbai-based

interior design Quirk Studio, Des. Disha Bhavasar and Des. Shivani Ajmera have always felt they were meant to be in design. Constantly evolving with the times, they now focus on finer aesthetics as they experiment with materials to create minimalistic and understated designs. Looking back on their beginnings, they say, "Our design is always evolving."



The two interior designers belonged to different worlds but their love for art and design inspired them to start Quirk Studio together in 2013. Des. Bhavasar moved from Muscat to study interior design at Nirmala Niketan, Bombay. This was followed by a Master's degree in Design Management at the Winchester School of Arts, University of Southampton. Des. Ajmera credits her current technical knowledge to her international exposure and training in design and art at the Florence Design Academy, Italy. Upon her return, she worked at leading architecture firms such as Talati and Panthaky and Red Architects, a path that led to the inception of Quirk Studio with Des. Disha Bhavasar.

Over the years, the duo has designed many celebrity design projects together. The landmark, close to their hearts, would be these, "House No. 12 and Office With a View have been pivotal projects in our journey due to the freedom we had from clients while designing the space. The trust and the challenge to push boundaries in terms of design helped us come into our own and was an integral part of forming Quirk Studio's design aesthetic."

Des. Bhavasar marvels at the vocabularies of Zaha Hadid, Marcel Wanders, Le Corbusier and Tadao Ando. "They have the ability to create a design aesthetic while adding an essence of themselves in their creations." While she was drawn to the finer details, Des. Ajmera preferred something modern and unconventional. She adds, "As a design student, I was immensely inspired by Philippe Starck. His free

spirit, unconventional style and use of fluid, organic lines as well as materials stuck with me and influenced my own design sensibilities and aesthetic." With a desire to bring design to daily life, she was equally motivated by Starck's drive to brighten people's lives using humor and every individuality into design.

With many celebrity clients on their list, the designers aren't new to luxury. However, their concept of 'luxury' is not limited to wealth and prestige. They say, "Luxury refers to quality, durability, sustainability and a timeless appeal. Luxurious spaces are not only identified by their indulgence but through the eco-friendly technology, deluxe material and features."

They say sustainable design is the new trend, and it's only going to get bigger. "Designers and clients have become more conscious. We should be more aware and intentional in augmenting sustainable design in our creations. We are constantly learning due to the evolution of design details, materials, and technology. We have to keep an open mind and be eager to learn from our employees, carpenters, consultants, vendors and everybody else we work with."

Though learning is crucial when working in the design industry, it is even more so when one is in charge of a multi-generational workforce. The designers attest to this, saying, "We have faced several challenges with the millennial generation, as most start-ups do. While they bring in great energy and insights, their laid-back attitude can be sometimes a challenge to work with."



Alta Vista

Location:
Mumbai

Concept:

To create a simple and sophisticated 700 sq. ft. residential space for a nuclear family, with an emphasis on community bonding. Originally conceived as a show flat, the design intent was to create an adaptive yet creative space that imbibes a homely feeling. The aesthetic was left neutral so that spaces seamlessly transition into each other.

Design Elements:

- Wooden louvered ceiling of varying colors, lights and neutral walls with monotone-textured wallpaper highlighted by contemporary brass sconces in the lift lobby area.
- Large grid mirror panelling in the living room for a visually expanding space.
- Olive-green sofa in suede and a tan leather armchair adds a pop of color to the neutral-toned living room, while a pair of marble-top coffee tables and black floor lamps add drama.
- Circular wooden dining table with tripod-style legs, grey suede dining chairs with brass accents and a bauble chandelier give a contemporary yet luxurious feel to the dining area.
- A classic white-and-grey theme with accent cherry-shaped pendant lights and warm wooden lights in the kitchen.
- Vibrant dusky-blue wallpaper with bird prints complements the grey interiors of the children's room. A Chesterfield grey suede day-bed, concrete pendant lights, white wardrobe, and white graphic prints enhance the décor.
- A panelled concrete-finished wall behind the upholstered bed in the master bedroom with a tinted glass wardrobe, nightstand, halo night lamps, and chandelier.
- Black-and-white art, wooden blinds and under-counter storage, artwork and plants with neutral-colored curtains allow the natural light to flow into the bathroom.





Anisha Jain Residence

Location:
Mumbai

Concept:

To conceive a design aesthetic for a 2000 sq. ft. 3BHK residence for a nuclear family that is stylish, design-centric yet simple and congenial.

Design Elements:

- An earthy palette for optimum natural light which opens up into a foyer and living room on the left. Splashes of pale pink and dusty pink add charm to the living room. Convivial art pieces add a coherent visual language to every space in the residence.
- A deep-blue sofa adds a pop of color and drama to the otherwise neutral-colored space devoid of primary colors. A color-blocked rug, seamless lighting, flooring, and walls accentuate the quirky furniture in muted colors.
- A blend of classic and contemporary pieces defines the décor in sync with the overall aesthetic.
- Metallic accents add glamour to the living area in the metal trim of the coffee tables and minimalistic lamps. The wooden chair counters the tone of the aesthetic.
- A grey sofa with leafy-green loose cushions makes it the perfect nesting den for the family. The bay window seat in the corner and floral wallpaper invite in the warmth of spring and summer.
- Monochromatic artwork on the walls, a suspended lighting fixture and an upholstered bed in the blue-themed color palette brighten the daughter's bedroom. The light-colored rug adds to the spacious layout.



photography :: Ira gosalia of phx india



photography :: kunal bhattacharya

House No. 12

Location:
Mumbai

Concept:

To envision an idyllic space spread over 2400 sq. ft. amidst the chaos and energy of Mumbai. The client comprised a young couple with a toddler, so the design aesthetic was to be a combination of classic, contemporary and modern aesthetic yet exude eclecticism through art, accent furniture, and lighting.

Design Elements:

- A neutral and monochromatic floor and wall palette adds layers to the space, with grey ceramic tiles in the living and dining room, and kitchen. Beige-toned walls with a metal shadow groove and Everest fiber-cement board add warmth along with a wood-finished ceiling.
- A customized marble console and an antique brass pipe screen with a cluster of grey-tinted glass pendant lights create a strong impact at the entrance foyer.
- Three seating areas maintain harmony despite being in different corners. An elevation differentiates the seating areas, with a wall crafted out of three-dimensional handmade tiles with a focus light to create shadows.



- Emphasis has been given to the live-edge wood dining table and chandelier by Ar. Arjun Rath, while the living area has a customized concrete-finished dome coffee table and comfortable armchairs from Phantom Hands.
- Solid-grey epoxy flooring and wooden-panelled ceiling take pride of place in the den, while furniture, books and an eclectic wall art add pops of color.
- Vintage floral wallpaper finished in antique mirror by Nilaya, a custom-made brass undercounter table with a circular brass-suspended mirror are present in the powder room.

House of Colour

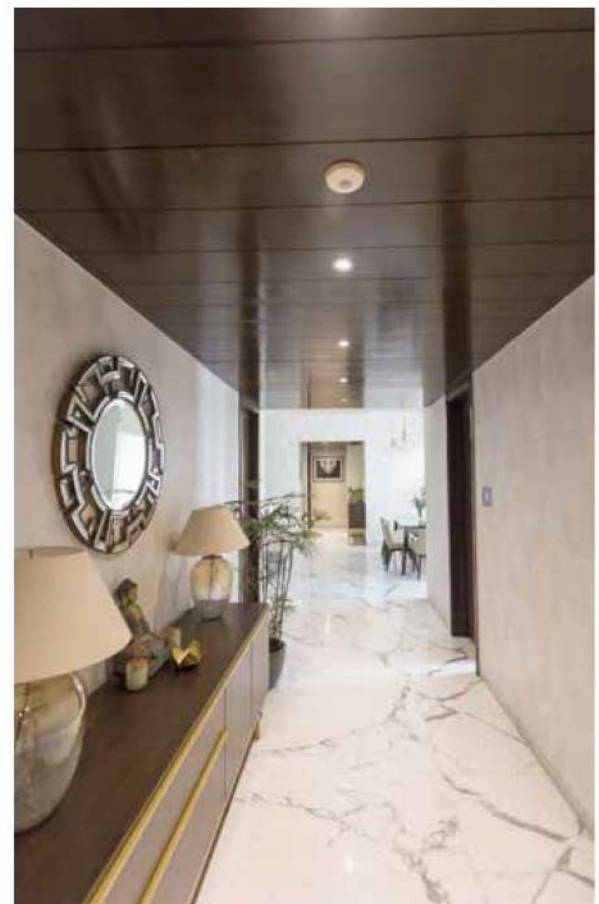
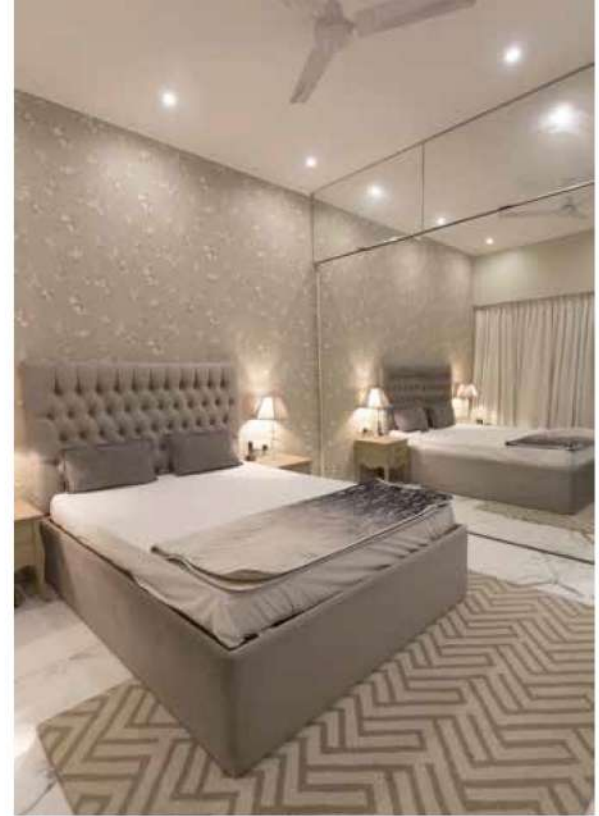
Location:
Mumbai

Concept:

To express a 1400 sq. ft. vibrant residence for a family, with a hospitable space for guests.

Design Elements:

- A mirrored corridor opens up to a spacious living area with ash-colored walls, grey sofa, sheer curtains, seamless lighting and muted furniture barring the statement chairs in bold colors. Prominently veined marble flooring is an important element.
- An elaborate mounted bar symbolizes a prohibition-era speakeasy while the life-sized terrarium adds movement and life.
- Floral wallpaper complements the two-toned furniture in the master bedroom and guest bedroom with mirrored panels in the wardrobe.
- Floral, water color-inspired wallpaper in the daughters' bedrooms create a balance between childlike whimsicality and grown-up sophistication. Soft wooden flooring exhibits high durability offering a natural space to play and hop.
- Classic tones and textures make up the minimalistic kitchenette broken up with pops of yellow.
- Black-and-white mosaic floor tiles create an optical illusion in the bathroom, with green cabinets and ample storage for the children.





photography :: pulkit sehgal

Office with a view

Location:
Mumbai

Concept:

To a fashion a 2800 sq. ft. office that spelled premium, contemporary and minimal in design. A feminine touch was to be added for the client's daughters – who ran their respective businesses – through color, furniture, and material.

Design Elements:

- Cabins, conference and meeting rooms were placed in the right wing with clear glass DGU partitions and black frames dividing the central space into an informal discussion and seating area. Large windows, open spaces and natural lights are emphasized.
- Dark-grey marble, walnut veneer, wooden flooring, black metal and gunmetal with brass accents were chosen to craft a luxurious appeal.
- A planter wall made of metal and a wooden box was created in the reception area with the heavy main door finished in black gunmetal sheets.
- A white Statuario marble table was chosen for the conference room with brass-edge detailing and tinted mirror base along with white leather chairs and sofa chairs with four statement brass-body bauble chandeliers.



- Soft pastel shades have been used for the daughters' offices with a sliding folding glass partition segregating the two, which can be removed for a larger space. An oxford-blue accent wall and floral wallpaper complete the space with brass metal elements.
- An exposed brick wall in the pantry is finished in white, contrasting with the dark-grey marble and blending with the sage and coral hexagonal handmade cement tiles.
- Dark-patterned leaf wallpaper and sage green subway tiles complement the use of biophilic design through the space. if

